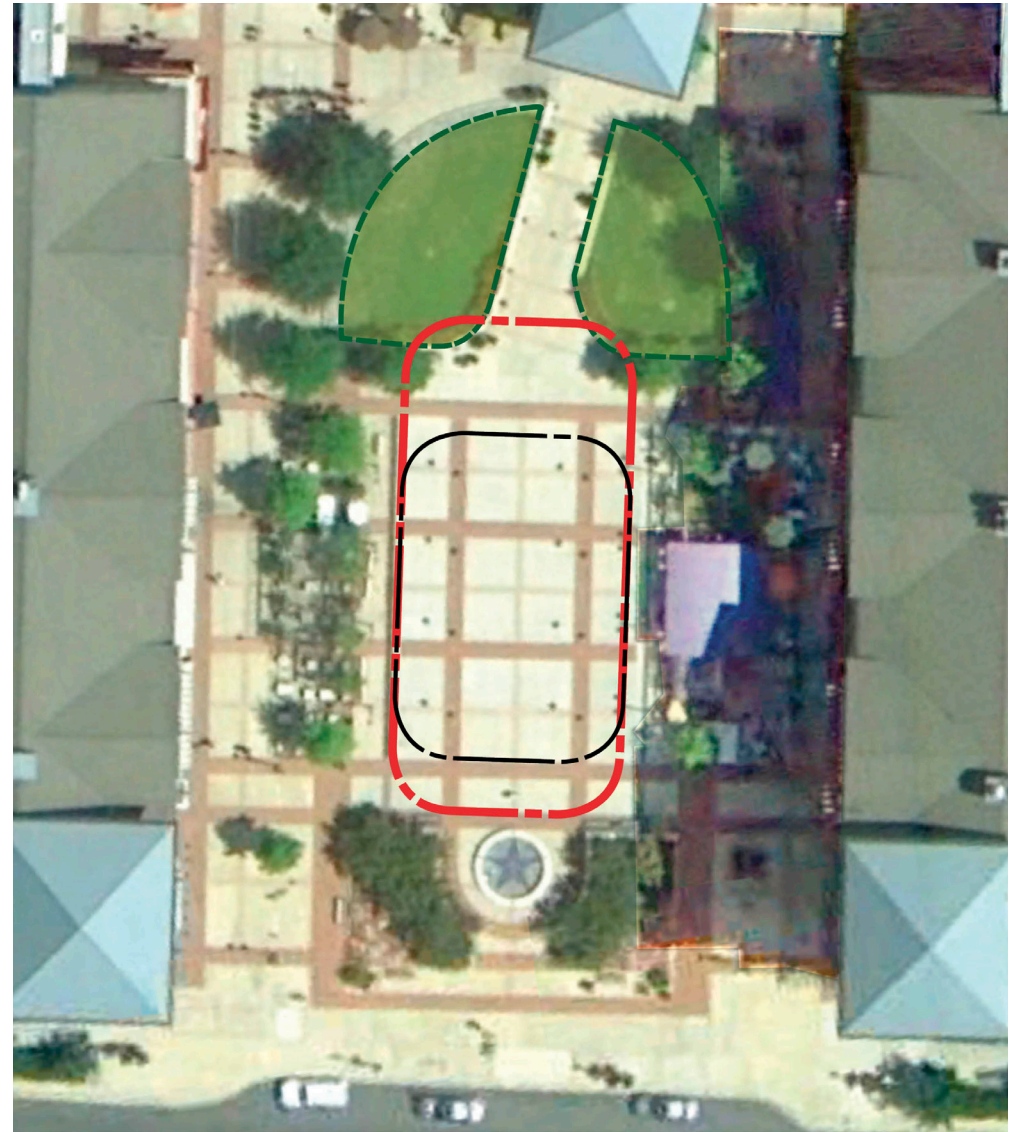
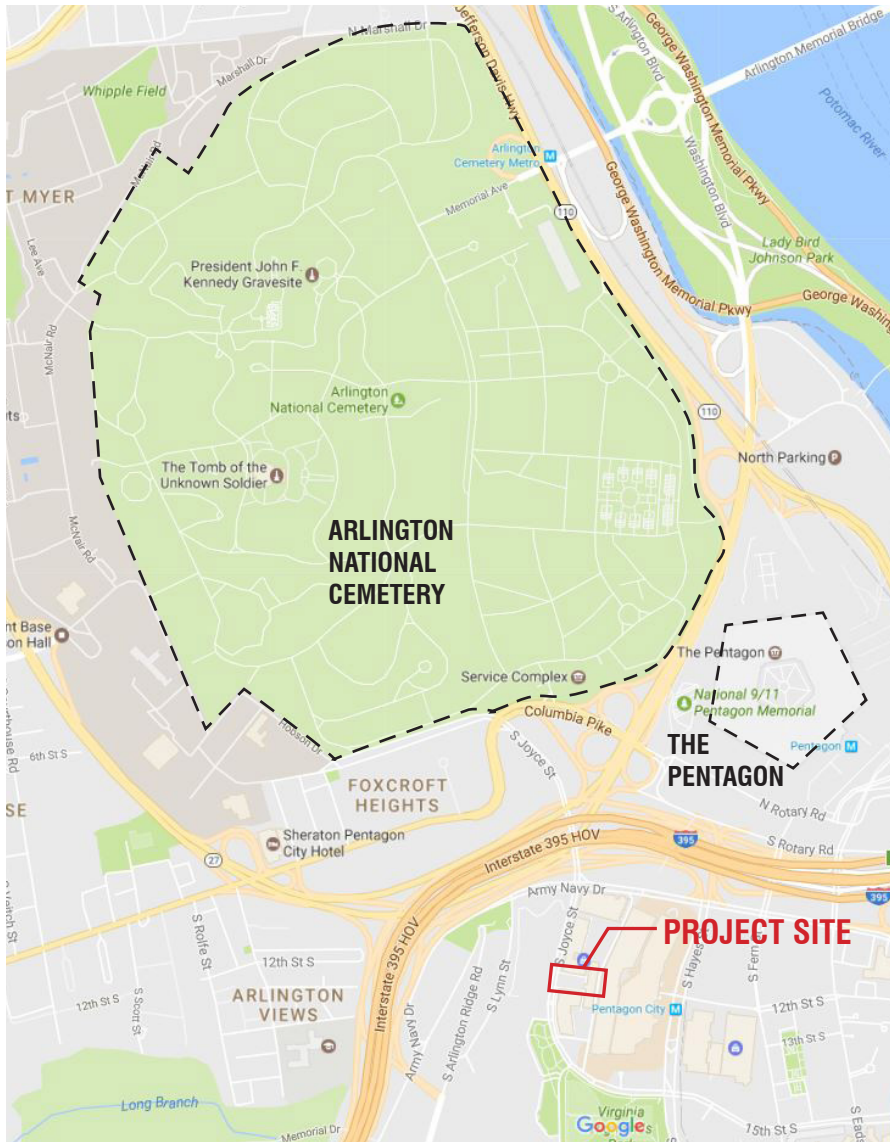




Photography credit: Holly Burke

PENTAGON ROW
Arlington, VA



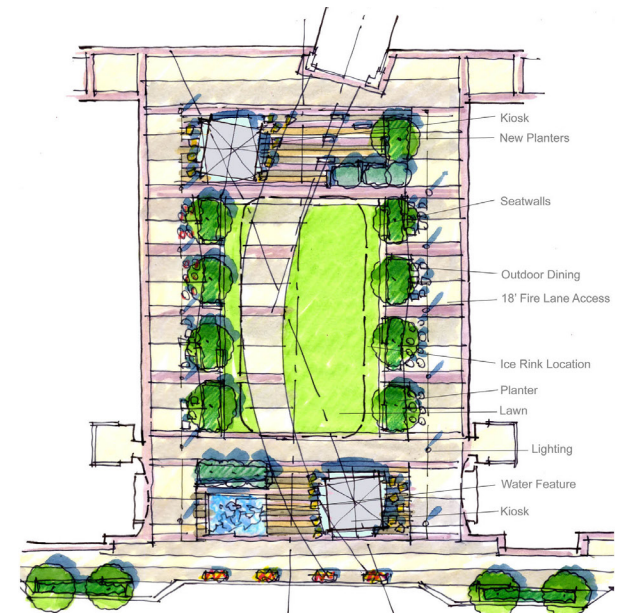
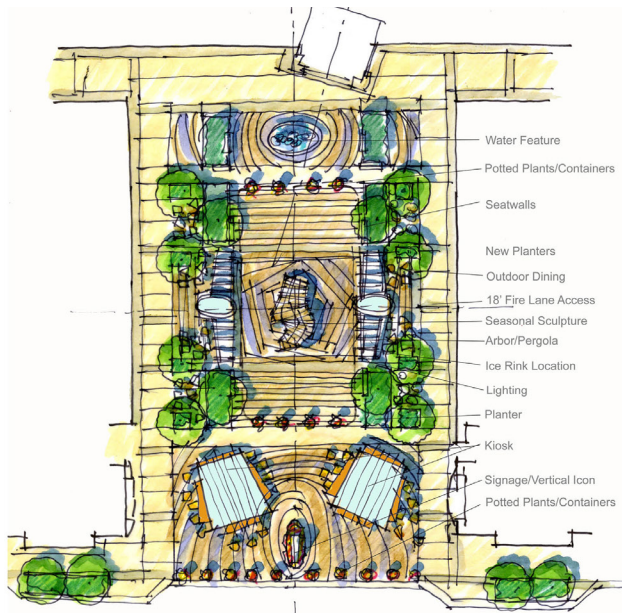
THE SITE | Situated just south of The Pentagon and Arlington National Cemetery in Arlington, VA, the existing plaza was barren and outdated with minimal vegetation to soften the mass amount of pavement. One primary design objective was to create a space that could accommodate an ice rink double the size of the original.

PENTAGON ROW
Arlington, VA



EXISTING CONDITIONS | The limited existing vegetation lined the perimeter of the plaza, blocked views into the space and created an uninviting and unusable sea of pavement. The open central area was only ever used for pedestrian circulation to and from the metro station entrance behind the clocktower.

PENTAGON ROW
Arlington, VA



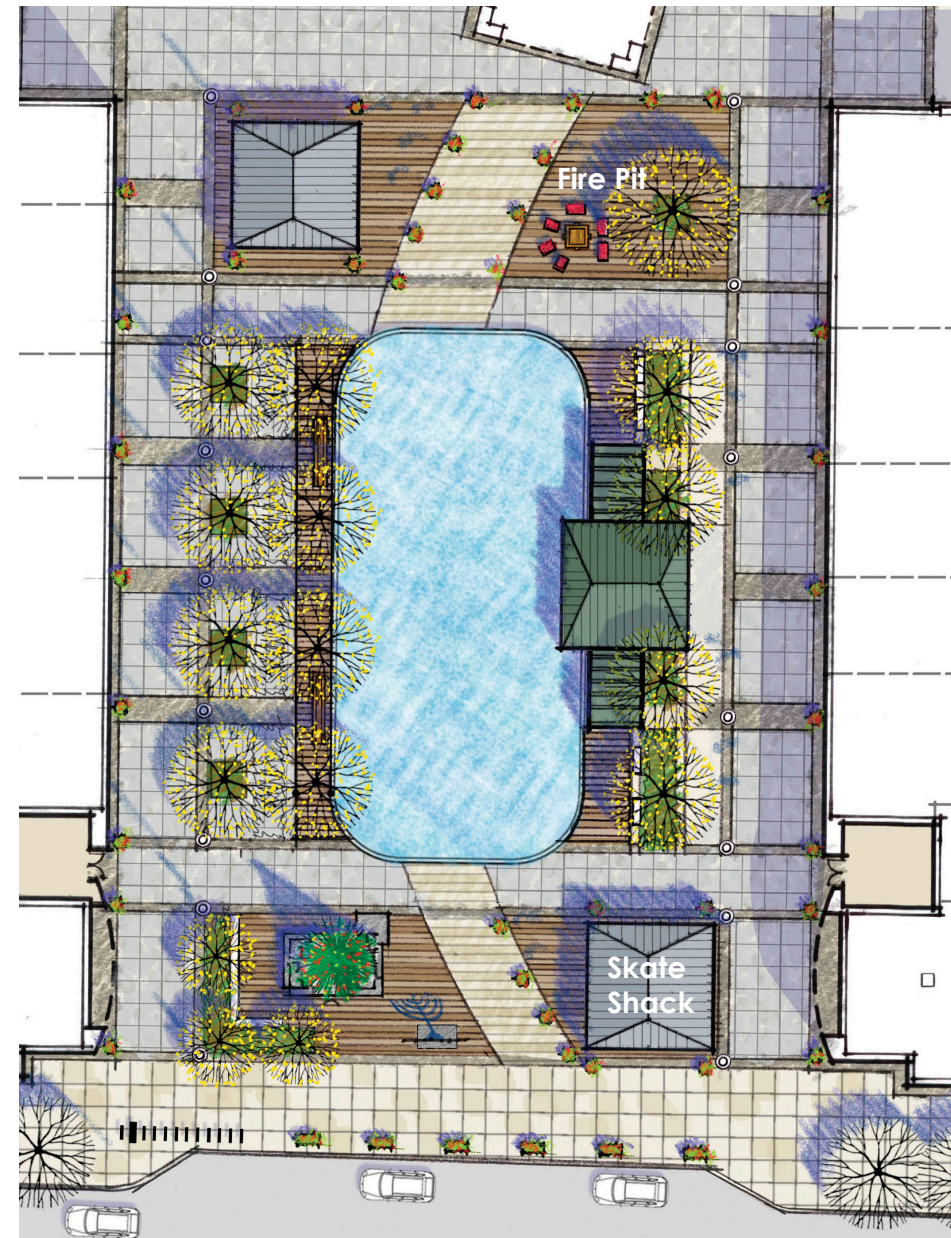
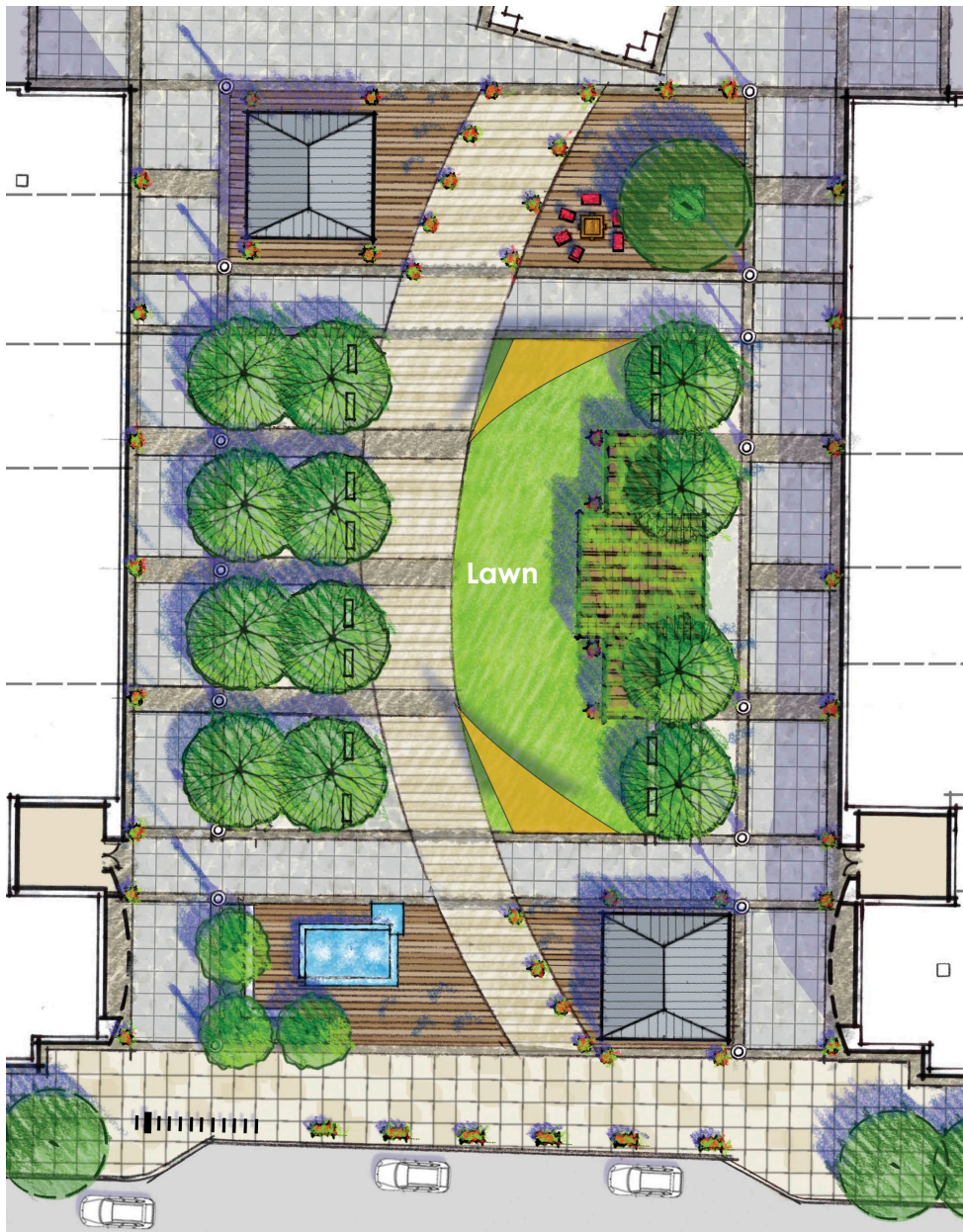
Early Concept Plan Sketches



Early Concept Illustrations

STAKEHOLDER INPUT | The design process involved creating a unifying central space for a wide variety of tenants each with their own design preference. Stakeholders included leasing agents, restaurant tenants, retailers, designers, and engineers. The designers prepared multiple concept sketches for input from these groups as well as the owner and county agencies.

PENTAGON ROW
Arlington, VA



Multi-season programming opportunities were a large influential factor.

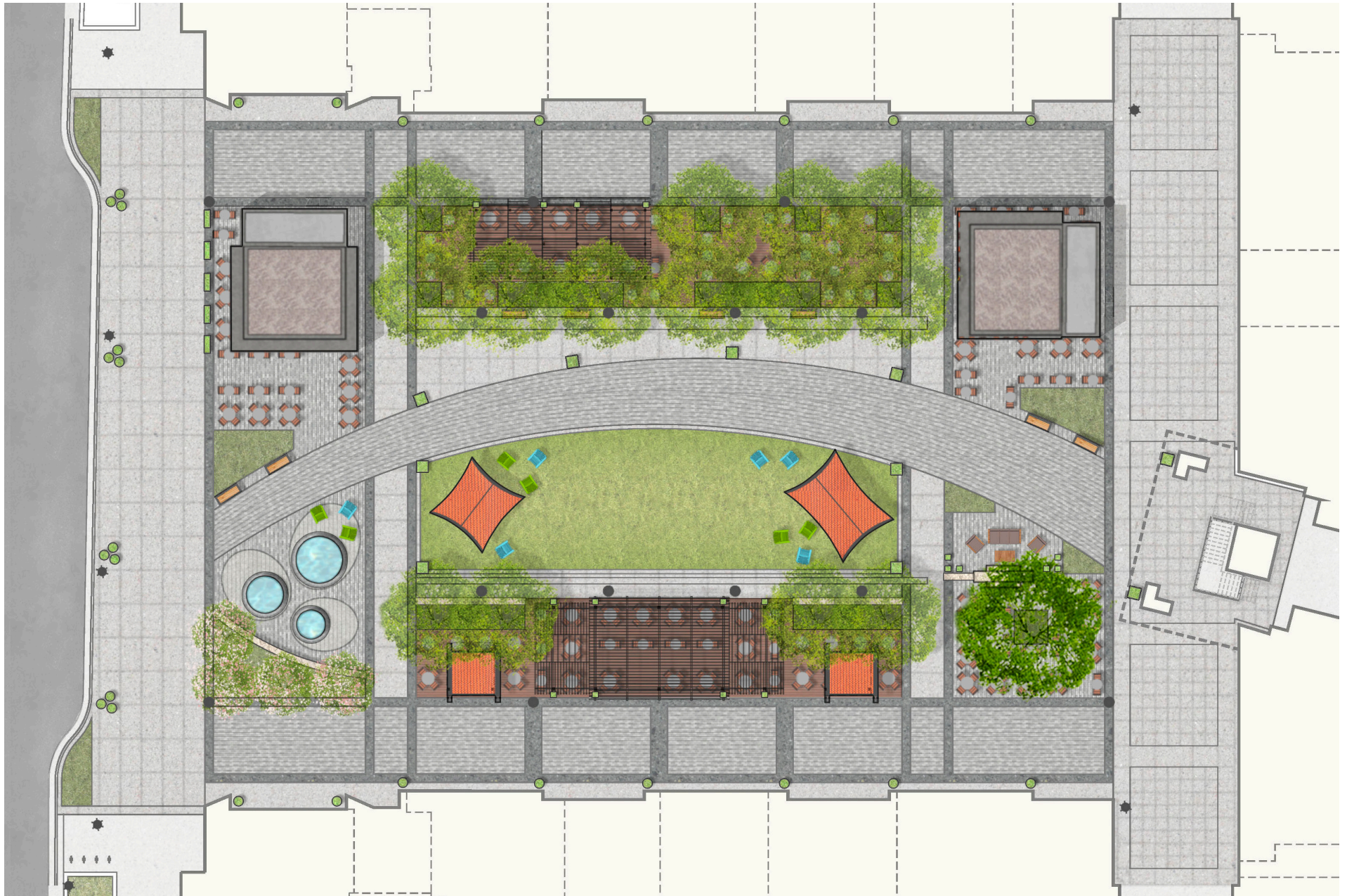
Summer:

- Central lawn softens the ground plane.
- Interactive fountains animate the space.
- Large canopy trees along edges provide shade.

Winter:

- Trees and structures carefully located to accommodate the ice rink.
- Fire pit attracts visitors.
- Festive lights and holiday displays animate the space

PENTAGON ROW
Arlington, VA



DESIGN | The final design allows for the required four season uses, while creating a new and vibrant community hub. A dominating paving arc emphasizes movement through the center of the plaza and establishes a central spine. The non-traditional geometry creates a variety of distinctly human-scaled spaces throughout the plaza.

PENTAGON ROW
Arlington, VA



Photography credit: Holly Burke

DAILY USE | Visitors, residents of adjacent apartments, and hotel guests alike can be found using the central lawn day and night. Two large removable shade structures double as a sculptural elements creating a clear sense of place, while still allowing for the winter installation of the ice rink.

PENTAGON ROW
Arlington, VA



Photography credit: Holly Burke

VISIBILITY & ACTIVATION | Visibility into the plaza has been improved at the street front. New fountains have become focal points -- animated with sequenced lights and jets-- and encourage children to interact.

PENTAGON ROW
Arlington, VA



Photography credit: Federal Realty

SKATE NIGHT | 50% larger than the original rink, Pentagon Row's 6,840 square foot ice rink is now the largest outdoor rink in Northern Virginia. Adding to the winter wonderland experience, guests can relax by an outdoor dual-sided stone fireplace during skating breaks.

PENTAGON ROW
Arlington, VA



Photography credit: Pentagon Row Facebook, April 15, 2016

ZONES | Distinct outdoor dining zones for each restaurant tenant were achieved through a simple custom designed removable railing system. The railing provides a consistent edge but allows for changes in layout throughout the seasons. Large canopy trees in these zones provide needed shade, while defining the structure of the plaza.

PENTAGON ROW
Arlington, VA



Photography credit: Pentagon Row Facebook. Let It Row Winter Spectacular 2014. December 10, 2014

ELEGANT STORMWATER | Designers were charged with creating as much usable space as possible, while meeting stormwater regulations. Wood decking serves as a pervious surface and introduces a warm sophisticated design element not often found in retail centers. This decking also protects the root zones of the trees, creating a healthier environment.

PENTAGON ROW
Arlington, VA



Photography credit: Pentagon Row Facebook. Let It Row Winter Spectacular 2014, December 16, 2014



Photography credit: Holly Burke

ATTENTION TO DETAIL | Form and function balance for optimum sustainability as well as aesthetics, creating a rich material vocabulary.

PENTAGON ROW
Arlington, VA



GATHERINGS | Rock on the Row, an anticipated summer concert series, is just one of many events that brings the surrounding community together in this central location.

PENTAGON ROW
Arlington, VA



Photography credit: Federal Realty



Photography credit: Pentagon Row Outdoor Ice Skating Plaza Facebook. Let It Row, December 7, 2014



Photography credit: Pentagon Row Outdoor Ice Skating Plaza Facebook. March 19, 2016

WINTER FUN | The new plaza and its vibrant character is a place where memories are made during the winter event, Frost Fest. It elevated an existing Arlington County commercial center to a beloved center for community gatherings.

PENTAGON ROW
Arlington, VA



Photography credit: Pentagon Row Facebook, Rock at the Row, June, 26, 2015

COMMUNITY | The multi-seasonal space has provided community members an inviting center to explore, not just for shopping but for a full range of lifestyle and entertainment activities.

PENTAGON ROW
Arlington, VA