

# EMBARK

2021  
2022



MD





# For Denver, smart waste receptacles mean smart savings.



## VICTOR STANLEY RELAY™

STREET LEVEL SENSING™ & WASTE CONTROL SERVICE

Bins equipped with Relay sensors provide the city of Denver with accurate, real-time data on fill level, area environmental conditions, pedestrian traffic and much more. This means more efficient collection, saving the city time and money on fewer unnecessary stops, and providing valuable insights for future planning.

### What can we do for your city?

Contact George Blevins at [georgeb@victorstanley.com](mailto:georgeb@victorstanley.com)



VICTORSTANLEY.COM

## THE MARYLAND CHAPTER

### AMERICAN SOCIETY OF LANDSCAPE ARCHITECTS

Founded in 1972, the Maryland Chapter of the ASLA is the professional association for landscape architects, representing nearly 300 members in 2020. Landscape architecture is a comprehensive discipline of land analysis, planning, design, management, preservation, and rehabilitation. ASLA promotes the landscape architecture profession and advances the practice through advocacy, education, communication, and fellowship.

### ACKNOWLEDGEMENTS

We would like to thank our members who continue to support the chapter and whose amazing work is included in this issue. We would like to extend a gracious thanks to our sponsors, many of whom have advertised in this magazine.

Cover design: Saba Hamidi

Cover photograph: Apotheosis by South Fork Studio Landscape Architecture

Editor: Benjamin Boyd

Support Team: Patrick Whealton, Om Khurjekar, Joe Ignatius, Kevin Gaughan, Lauren Hill

## CONTENTS

ABOUT THE CHAPTER	03
CHAPTER REPORTS	06
YEAR IN REVIEW	09
STUDENT CHAPTER UPDATE	12
AWARDS	15



# MEET THE BOARD

## EXECUTIVE BOARD 2022-2023

**Joe Ignatius, ASLA**  
President  
Floura Teeter Landscape Architects

**Om Khurjekar, ASLA**  
Trustee  
Hord Coplan Macht

**Kevin Gaughan, ASLA**  
Treasurer  
FORM Garden Design +  
Landscape Architecture

**Michael Pullano, ASLA**  
Secretary  
Design Collective

**Christopher Ellis, ASLA**  
Member-at-Large  
University of Maryland -  
College Park

**Laurel McSherry, ASLA**  
Member-at-Large  
Morgan State University

**Patrick Whealton, ASLA**  
Member-at-Large  
Hord Coplan Macht

**Michael Humes, ASLA**  
Member-at-Large  
Mahan Rykiel

**George Blevins**  
Affiliate-at-Large  
Victor Stanley

**Tracey Friedly**  
Affiliate-at-Large  
Barbara Nolan Inc.

**Lauren Bostic Hill**  
Executive Director  
AIA Baltimore



**The smart landscape has arrived.**

SHUFFLE combines advanced technology and modern design to make outdoor spaces smart and connected. Integrating lighting, Wi-Fi, and safety and communication devices, it creates a sense of security and well-being outdoors – enhancing the quality of life for residents and visitors. SHUFFLE is a product of our collaboration with Schréder, a global leader in lighting and smart-city technologies for more than 100 years.

**Tracey Friedly**, Nolan Brands  
443.280.7007  
tracey@nolanbrands.com

DESIGN. CULTURE. CRAFT.



# PRESIDENT'S MESSAGE

**JOE IGNATIUS, PLA, ASLA**  
2021-2023 PRESIDENT



EMBARK VII was quite the journey to get into production and we thank you for your patience in waiting for its release. Similar to LAM, EMBARK allows us to archive, document, and highlight the Chapter's activities and history. We decided it would be best to combine our 2021 and 2022 issues, to cover our 50th anniversary. I am grateful to our past president, Ben Boyd, who has put in the extra effort from afar in North Carolina while navigating a new job, new home, and expanding family to make this issue come to life. It really does take a village to run our chapter. Without our volunteers, none of this would have been possible, so THANK YOU!

Also, I would like to thank our wonderful sponsors and members of our Circle of Support. Our Chapter Operations, the Annual Gala, EMBARK, and our scholarships would not be made possible without this generous support! Please consider joining us as a sponsor during the rest of 2023 or in 2024 to continue advancing our mission of promoting and supporting our members and profession.

2021 and 2022 presented a myriad of opportunities and challenges. The ongoing COVID-19 pandemic required our patience and resilience. The awing speed of the development and distribution of a vaccine allowed us to return to a sense of normality. We experienced leadership changes in our state and federal governments, as well as our chapter and AIA management team. As I took over as president of our great chapter, my first order of business was assisting AIA Baltimore and Baltimore Architecture Foundation in finding a new Executive Director. After a thorough search, we found a great leader to help us accomplish our mission and day-to-day operations, Lauren Bostic Hill. She has brought on a terrific staff that has allowed us to accomplish so much in 2022. In the fall of 2020, we moved into our new home at the Center for Architecture and Design. We were then able to utilize it more in 2021 for events, board meetings, and exhibits. It is a beautiful new space that will allow us to be part of the greater design community and be among the bustle of visitors, residents, and businesses in Downtown Baltimore. During these years, we have experienced the highs and lows of our membership totals. As of now, in the middle of 2023, we are back to pre-pandemic members and growing. Thanks again so much for your support and I look forward to continuing to serve this great chapter!

2021-2022 by the numbers:

- 330 MDASLA members, back to pre-pandemic levels, with our largest share of students ever!
- 27 LA CES-approved courses, including our new Lunchtime Learning Series
- 600 attendees getting their much-needed CEUs.
- 2 IN-PERSON galas, both touted as the best yet!
- 3 new Fellows in Brenda Iraola, Dennis Nola, and Joan Floura!
- 1 Stormwater Tour, virtual for the first time ever
- 2 Regional Conferences with Virginia and Potomac Chapters, with over 15 LA CES credits, including in-person tours and virtual learning
- 1 Frederick Law Olmsted Event honoring Olmsted 200

Thanks again to all our members, sponsors, and volunteers. The future looks bright for our profession, in part due to recent legislation by our state and federal governments that will undoubtedly boost industries that our work touches. I look forward to seeing you at our future events. If you would like to get involved at the chapter level, please reach out and email me at [president@marylandasla.org](mailto:president@marylandasla.org).

# TRUSTEE'S MESSAGE

**OM KHURJEKAR, PLA, ASLA**  
TRUSTEE



Friends,

I want to express my heartfelt gratitude for the opportunity to serve a second term as Trustee of the Maryland Chapter of ASLA. Your support and trust mean a great deal to me. I assure you that during the next three years of my term, I will continue to serve the chapter and represent you at the National ASLA level. My first term was incredibly exciting, working alongside the current leadership, who I firmly believe put in tremendous effort to cater to the needs of our members. We are truly a member-centric organization!

This has been a thrilling period for ASLA, both regionally and nationally. Personally, the MDASLA 50th Anniversary and AWARDS GALA stood out as the highlight of the fall of 2022 for me, and I hope it was an equally exciting event for all of you. Our chapter has been blessed with the contributions and dedication of many intelligent, enthusiastic, and committed Presidents, board members, and volunteers. The 50th Anniversary served as a recognition of this unwavering commitment to service and our profession, including the panel session that focused on the chapter's history.

On a special note, I am immensely grateful for receiving the Mid-Career Achievement Award. It was an unexpected and humbling surprise for me. I aspire to continue making valuable contributions to our profession. Needless to say, delivering a message to the

membership in this edition of EMBARK holds great significance for me. EMBARK was a dream that a few of us envisioned back in 2009-2010 during my tenure as President of the Chapter. The first EMBARK issue was published that year. This dream turned into a reality thanks to the unwavering dedication and perseverance of others who recognized the importance of this publication. I extend my gratitude to all the past Presidents who followed and their EMBARK teams, as they have made this publication a top priority. I would also like to acknowledge that this would not be possible without the continued generous contributions of our dedicated sponsors and Circle of Support firms. It brings me great joy to witness how EMBARK keeps improving each year, serving as a premier magazine that showcases the excellent award-winning work of our members. My best wishes go out to the EMBARK team for their continued success in the years to come.

As I have always maintained, ASLA is where I found my closest friends. I make it a point to share this story with everyone I meet. It is vital for young potential members to know that this organization warmly welcomes new members and volunteers, providing excellent opportunities to serve the profession in various capacities. Everyone is invited, and every contribution matters. In conclusion, I urge all of you to serve or contribute to our chapter and ASLA. To those who are already involved, I extend my sincere gratitude for your service. We always welcome new members and volunteers, as our strength lies in our unity. I firmly believe that the larger our team, the better our work and the greater our impact on the world. So, join us and encourage your colleagues, peers, and team members to get involved and give back to the profession.

Best Regards,

Om Khurjekar, ASLA  
Trustee MDASLA



CELEBRATING  
1977-2022  
**45**  
YEARS



**COUNTRY CASUAL TEAK**  
OUTDOOR FURNITURE SINCE 1977

PROUD TO BE A MARYLAND-BASED BUSINESS  
CONTACT US AT 800.289.8325 OR COUNTRYCASUALTEAK.COM  
FOR PRODUCT SPECS OR PROPOSALS FOR YOUR NEXT PROJECT

## 2022 YEAR-IN-REVIEW

### 50th ANNIVERSARY CELEBRATION

The Maryland Chapter celebrated its 50th Anniversary at the 2022 Awards Gala to recognize the exceptional work and accomplishments of its members. In the 50 years since its founding, landscape architects have made an indelible mark on Maryland and the regional landscape through such iconic designs including contributions to Columbia MD, the Inner Harbor, and countless other places that contribute to the livability and economic vitality of the state. The MDASLA has promoted the protection of the environment via polices and standards that balance human needs and environmental sustainability. Landscape Architects have contributed to the everyday landscapes by shaping pathways, streetscapes, parks, playground and countless other environments that Marylanders work, play and enjoy the many benefits of getting closer to nature.

To celebrate the milestone, event organizers assembled a panel of long-time members and leaders within the profession to present a retrospective of major accomplishments and the impacts that the chapter has had on the field of landscape architecture. The panel was comprised of Greg Hoer (chapter president, 1980), Grace Fielder (member of the Maryland Board of Examiners of Landscape Architects), Barbara Hopkins (Chapter President 2016-2017), and Brian Reetz (chapter president, 2004) and was moderated by Jack Sullivan, FASLA, and Associate Professor of Landscape Architecture at the University of Maryland College Park.





Greg Hoer recalled that there was much optimism among the members of the newly formed Maryland ASLA chapter during the 1970s. On one occasion, an audience gathered at Goucher College, saw the first public presentation of the ASLA produced film to describe and promote landscape architecture. The film was also shown on public television during subsequent months. Additionally, over the past several decades there has been a noticeable increase of landscape architectural employment opportunities both within and with engineering firms as subconsultants. The value of landscape architects working in a project team environment has certainly been recognized.

Grace Fielder noted that Maryland was the 17th state to license landscape architects. The bill took effect on July 1, 1971 having been signed into law by Governor Marvin Mandel. The bill defined the terms of the practice of Landscape Architecture, stated requirements for licensure, and established the Board of Examiners. Spencer Ellis, Jack Daft and Edward Kilduff were the first three landscape architects to serve on the board and were instrumental in establishing the Maryland Chapter. Today there are 1, 198 professional landscape architects in the State of Maryland.

Barbara Hopkins' work is all about taking the left over, trash-filled and invasive laden lands in the inner suburbs and turning them into places that provide new recreational space, treat stormwater with green infrastructure, and do all of that in an aesthetically coherent way that manages to raise the value of an aging housing stock. Barbara highlighted the incredible impact that we've seen landscape architecture have on the quality of life in underserved, inner-suburban communities.

Brian Reetz discussed the professional mentors that have and continue to influence the profession. He elaborated on how the Maryland Stormwater Act of 2007 and green infrastructure projects have given our profession new opportunities to shine and be leaders in our industry.





# 2022 STUDENT CHAPTER UPDATE

## UNIVERSITY OF MARYLAND COLLEGE PARK

**JAVI DIAZ-ORTIZ**  
PRESIDENT

University of Maryland SASLA commenced the year by brainstorming and gathering materials for our Park(ing) Day display, titled "Coffee in the Park(ing) Spot." Our parklet offered coffee and donuts, seating, greenery, shade, games, and used books from our library. We enjoyed welcoming people into our space and shedding light on the importance of urban green space. Park(ing) Day would not have been possible without the help of the individuals and groups who stepped in with support.

**MCKENZIE FEI**  
UNDERGRADUATE VICE PRESIDENT

**MICAELA ADA**  
GRADUATE VICE PRESIDENT

Soon after Park(ing) Day, we held a Lunch and Learn with CK Kraft from ANOVA Furnishings. Next, we welcomed UMD alumni Kelley Okleson, Natalia Bezerra, and Kim Jacobs as they offered their advice on professional wellness. Right before Halloween, students competed for 'Most Creative Pumpkin' at our annual Pumpkin Carving Party. We got our hands dirty again as we volunteered with a non-profit organization, CKAR, to build a rain garden for an underserved community.

**MADISON MOHAN**  
SECRETARY

**EMMA STEURNAGLE**  
TREASURER

SASLA has also taken advantage of professional development opportunities. A group of our students spent an evening socializing, networking, and learning about award-winning projects at MD ASLA's Awards Gala! More networking opportunities presented themselves at our very own Happy Hour event, as well as at the ASLA Conference. Twelve students traveled to San Francisco with the help of our sponsors and our own fundraising efforts, such as our t-shirt sale. The conference was filled with learning, networking, bonding, and sightseeing, and we are excited to start fundraising for LABash! We like to keep our community updated through @umd\_larc on Instagram.

**ALIYA MEJIAS**  
FUNDRAISING CHAIR

**MAIA KESSLER**  
OUTREACH COORDINATOR



## MORGAN STATE UNIVERSITY

**E. VICTORIA**  
PRESIDENT

This year the Graduate Landscape Architecture Program at Morgan State celebrates the 40th anniversary of our first graduating class in 1982. In this period of reflection, we look both backward and forward to commemorate this evolutionary milestone for our Program, its alumni, and landscape architecture in the State of Maryland.

**JULIA ROCHA**  
VICE PRESIDENT

**KELLY LAWSON**  
SECRETARY

The timing of this anniversary is especially meaningful as it coincides with the successful re-accreditation of our Master of Landscape Architecture degree this spring by the Landscape Architectural Accreditation Board (LAAB). Preparing for the visit by the LAAB site review team – Charlene LeBleu, FCELA, FASLA, AICP; Gaines Hall, FAIA, and Rodney Swink, FASLA, PLA – constituted a years-long effort, and included contributions by students to the self-study report, physical and digital exhibitions of course outcomes, and participation in meetings and receptions with alumni, practitioners, administrators, and the team itself. We had the opportunity to further emphasize our distinction as the country's only MLA program offered by an Historically Black Institution and to illuminate the ways in which our work and our Program foreground issues of diversity, equity, and inclusion.

In conjunction with faculty, our SASLA chapter established initiatives to highlight the influence our individual backgrounds and experiences have on our work. This fall we launched an interdisciplinary campus Stroll and Sketch, a monthly student Spotlight Series on Instagram, and a digital exposition featuring MLA capstone projects -- several of which used the opportunity of our campus and its urban location to explore issues critical to our profession, such as transboundary water resource management and food justice. Other recent and ongoing community-informed studios and projects include an equity of access study for Baltimore's Masonville Cove -- the nation's first Urban Wildlife Refuge Partnership, a collaboration with Program alumna Meredith Watters (MLA 1985) on a plan for the grounds of Third Haven Friends Meeting in Easton, Maryland, and another reimagining the 'middle landscape' of Baltimore County's Security Square Mall.





# SIMPLICITY TO DESIGN THE COMPLEX.

Create with more tools and fewer mouse clicks,  
and discover a better way to design.

Get your free trial at [VECTORWORKS.NET/MDASLA21](https://vectorworks.net/mdasla21)



**VECTORWORKS**  
A NEMETSCHek COMPANY

TAICANG YUQIN GARDEN | COURTESY OF PLACEMEDIA LANDSCAPE ARCHITECTS COLLABORATIVE AND EIICHI KANO

## 2021-2022 MDASLA AWARDS

The intent of the annual Maryland ASLA Awards Program is to encourage professional excellence in Maryland and the Washington Metropolitan Area by recognizing significant completed as well as un-built Landscape Architectural projects. The objective is to bring public attention to the outstanding services of landscape architects by honoring them with professional awards for projects that demonstrate a superior quality of design and execution.

### AWARD CATEGORIES

#### GENERAL DESIGN

Recognizes site-specific works of landscape architecture or urban design. Professional entries in this category must be built. Typical entries include public, institutional, or private landscapes of all kinds (except residential design), including but not limited to: historic preservation, reclamation, conservation, green roofs, stormwater management, sustainability, large-scale residential, mixed-use and community design.

#### ANALYSIS + PLANNING

Recognizes the wide variety of professional activities that lead to, guide, and evaluate landscape architecture design. Entries in this category are not required to be built or implemented. Entries include urban, suburban, rural, or regional planning or development guidelines, transportation/town/campus planning, plans for reclamation of brownfield sites, environmental planning for legislative or policy initiatives or regulatory controls, cultural resource reports, natural resource protection, historic preservation planning, and more.

#### COMMUNICATIONS

Recognizes achievements in communicating landscape architecture works, techniques, technologies, history, or theory, and the lesson value to an intended audience. Typical entrants include print media, film, video, audio, CD, or DVD formats, online communications, interpretive design, exhibition design, and more.

#### INSTITUTIONAL DESIGN

Recognizes site specific works of landscape architecture and entries in this category must be built. Typical entries include institutional landscapes such as schools, hospitals, and campus design. Entries can be for master-planning or specific projects. Projects in this category could also qualify for the General Design category, but only one category may be selected per project.

#### UN-BUILT DESIGN

Recognizes innovative vision within landscape architecture or urban design for projects that have not been built. Typical entries include unbuilt general design and residential design projects.

#### INFRASTRUCTURAL DESIGN

Recognizes site-specific works of landscape architecture and entries in this category must be built. Typical entries include infrastructure projects including green infrastructure like constructed wetlands, green streets, and wildlife corridors as well as sustainable design in transportation or coastal resilience. Projects in the category could also qualify for the General Design category, but only one category may be selected per project.

#### RESIDENTIAL DESIGN - SINGLE FAMILY

Recognizes site-specific works of landscape architecture and entries in this category must be built. Typical entries include single-family or individual townhome residential projects, activity areas for cooking/entertaining/recreation/relaxation, sustainable landscape applications, new construction or renovation projects, historic preservation, affordable landscape concepts and innovations, and more.

#### RESIDENTIAL DESIGN - MULTI FAMILY

Recognizes site-specific works of landscape architecture and entries in this category must be built. Typical entries include multi-family and mixed-use residential projects, activity areas for cooking/entertaining/recreation/relaxation, sustainable landscape applications, new construction or renovation projects, historic preservation, affordable landscape concepts and innovations, and more.

#### RESEARCH

Recognizes research that identifies and investigates challenges posed in landscape architecture, providing results that advance the body of knowledge for the profession. Typical entries include investigations into methods, techniques, or materials related to landscape architecture practice; studies of relationships of landscape architecture to law, education, public health and safety, or public policy; and more.



# AWARDS OF EXCELLENCE



## 2021 LIFETIME ACHIEVEMENT

**ROBERT GORMAN, FASLA**  
GORMAN DESIGN, INC.

Bob Gorman has been a member of Maryland ASLA for four decades. He served in the Army in Vietnam and began his career at a small firm in Delaware before moving to Maryland in the early 70's. He was a partner at LDR in Columbia and then head of the landscape architecture group at RTKL in Baltimore, where he grew the international practice. He retired in 2016 but remains active through his own practice. He has been elected to the College of Fellows of ASLA for his design excellence and deep portfolio of built work locally, nationally, and internationally. Bob has been a dedicated mentor to many landscape architects and a great friend to those who have benefitted from his internships. He has received the Maryland ASLA Lifetime Achievement Award.



## 2022 LIFETIME ACHIEVEMENT

**DENNIS NOLA, FASLA**  
UNIVERSITY OF MARYLAND

Dennis Nola is a respected landscape architecture professor and former President of Maryland ASLA. He has recently chaired the Landscape Architecture Department at the University of Maryland, with a focus on conservation and environmental planning. He also ran two study abroad programs and has a private practice. Nola is actively involved in community development and is dedicated to teaching, design and preserving the environment.



## 2021 MID-CAREER AWARD

**COLLEEN VACELET**  
INTREEGUE DESIGNS

Colleen Vacelet, ASLA, is the founder of Intreegue Landscape Architecture and an environmental steward. She has a double degree in Landscape Architecture and Horticulture and is a licensed Landscape Architect, Certified Arborist, and Horticulturist. Colleen is an adjunct professor at University of Maryland, board member for Cyllburn Arboretum, and served on the board of MDASLA. She was recently honored as a Baltimore Business Journal 40 Under 40 Honoree and received the GBC Bridging the Gap Achievement award. Colleen is committed to furthering the profession of landscape architecture through her work, teaching and service.



## 2022 MID-CAREER AWARD

**OM KHURJEKAR**  
HORD COPLAN MACHT

Om is a Principal at Hord Coplan Macht with over 22 years of experience in landscape architecture. He has worked on a variety of projects, including public parks, university campuses, hospitality and entertainment projects, and streetscapes. Om has been an active member of the ASLA Maryland chapter for several decades and served as its former President. He is recognized for his broad knowledge and commitment to the landscape architecture profession.



# AWARDS OF EXCELLENCE



## 2021 SPENCER ELLIS AWARD

**WILLIAM BAKER**  
CHESAPEAKE BAY FOUNDATION

William Baker has been the president of Chesapeake Bay Foundation since 1982 and started as an intern in 1976. Under his leadership, CBF has received numerous awards, including the 1992 Presidential Medal for Environmental Excellence. Baker is involved in the community, serving as a trustee of Johns Hopkins Medicine, director of Brown Advisory, and member of other organizations. He has committed to environmental causes and community service for many years.



## 2022 SPENCER ELLIS AWARD

**PARKS AND PEOPLE FOUNDATION**

Parks & People is a Baltimore-based organization that focuses on expanding park opportunities and enhancing green spaces in Baltimore City. They provide educational programming, summer camps and work on various projects to preserve and enhance the city's urban fabric. For over 30 years, the organization has been an advocate for communities in need and has received the Spencer Ellis Award for their efforts and contributions to Baltimore. Steve Preston and Laura Connelly were present to receive the award.



## 2021 EMERGING PROFESSIONAL AWARD

**MICHAEL PULLANO**  
DESIGN COLLECTIVE

Michael Pullano is an Associate of the American Society of Landscape Architects (ASLA) who graduated from the University of Maryland in 2019. After graduation, he joined Design Collective and became involved with the Maryland ALSA, serving on the Executive Committee as Junior Professional Representative and later being elected Secretary. He also chairs the Emerging Professionals Committee and leads a local study group preparing for the Landscape Architect Registration Exam.



## 2022 AWARD OF EXCELLENCE

**J. KENNETH SCHMIDT**  
MAHAN RYKIEL ASSOCIATES

Ken Schmidt has been a knowledgeable and respected figure in the landscape architecture field, known for his expertise in plant material, wood projects, and specifications. He is affectionately referred to as "Ken-cyclopedia" and "Ken-tastic" for his vast knowledge. Ken has been a wonderful mentor, leading by example and always willing to share his knowledge and provide support. He helped to foster the growth of many emerging landscape architects over the years.



## STUDENT AWARDS

### 2021

**DAYANARA PADILLA**  
UNIVERSITY OF MARYLAND COLLEGE PARK  
HONOR AWARD

**EMMA PODIETZ**  
UNIVERSITY OF MARYLAND COLLEGE PARK  
HONOR AWARD

**MAURA ROTH-GORMLEY**  
MORGAN STATE UNIVERSITY  
HONOR AWARD

**IAN BURKHARDT**  
UNIVERSITY OF MARYLAND COLLEGE PARK  
MERIT AWARD

**SHAHROUZ GHANI GHAISHGHOURSHAGH**  
MORGAN STATE UNIVERSITY  
MERIT AWARD

**RYAN HERILLA**  
UNIVERSITY OF MARYLAND COLLEGE PARK  
MERIT AWARD

**ALISON KIMBER JONES**  
UNIVERSITY OF MARYLAND COLLEGE PARK  
MERIT AWARD

**EMILY STANCLIFF**  
UNIVERSITY OF MARYLAND COLLEGE PARK  
MERIT AWARD

### 2022

**TALI KIRSHENBOIM**  
UNIVERSITY OF MARYLAND COLLEGE PARK  
HONOR AWARD

**MAURA ROTH-GORMLEY**  
MORGAN STATE UNIVERSITY  
HONOR AWARD

**HANNAH SAVIO**  
UNIVERSITY OF MARYLAND COLLEGE PARK  
HONOR AWARD

**ANTHONY DYE**  
MORGAN STATE UNIVERSITY  
MERIT AWARD

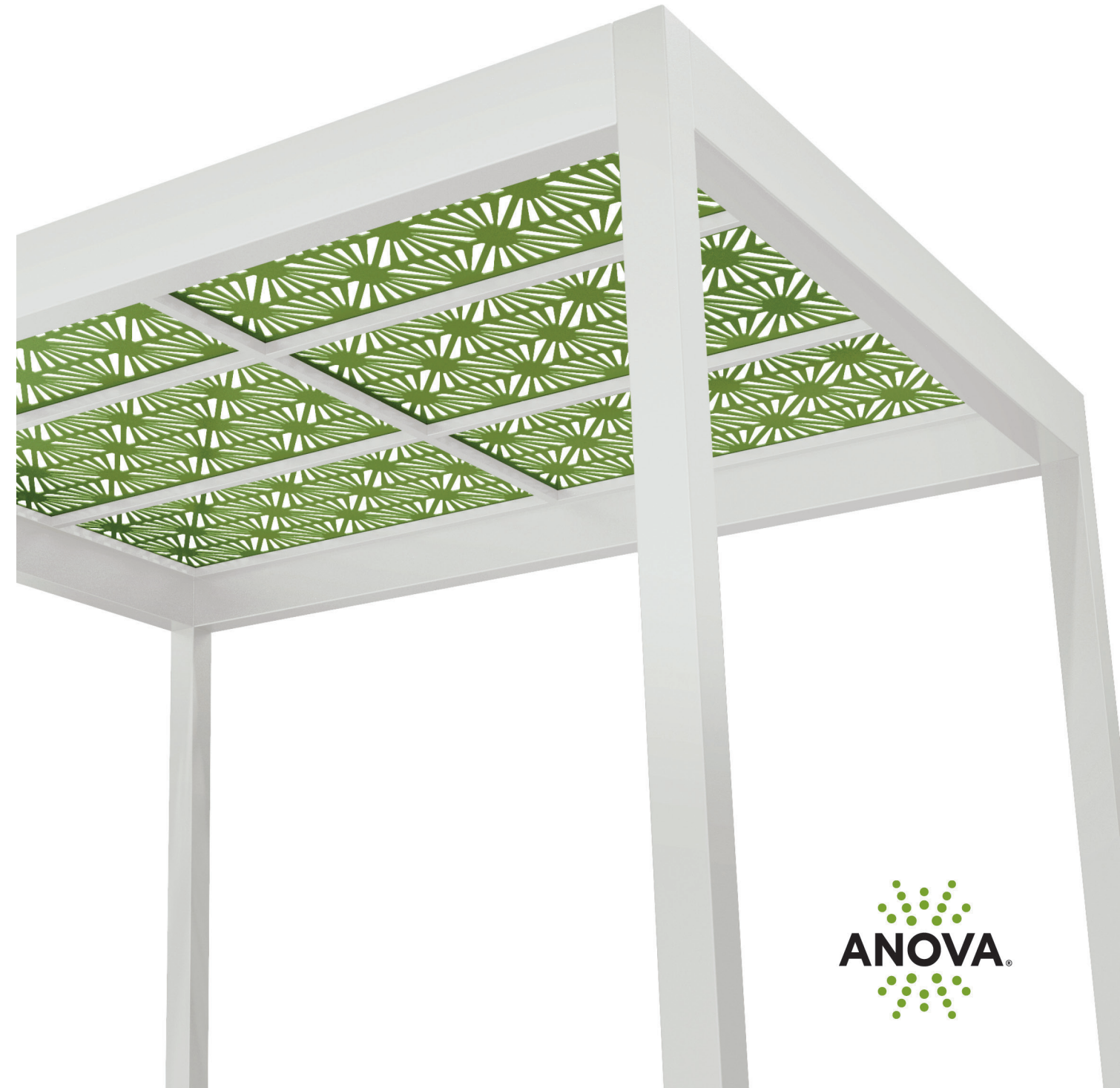
**LUKE PETERSON**  
UNIVERSITY OF MARYLAND COLLEGE PARK  
MERIT AWARD

**XIAOJIN REN**  
UNIVERSITY OF MARYLAND COLLEGE PARK  
MERIT AWARD

**ALYSSA STEEL**  
UNIVERSITY OF MARYLAND COLLEGE PARK  
MERIT AWARD

**YIKE XU**  
UNIVERSITY OF MARYLAND COLLEGE PARK  
MERIT AWARD

# Introducing *Shade Structures*





2021 PRESIDENTIAL AWARD OF EXCELLENCE  
UN-BUILT DESIGN

# BLISS MEADOWS

BALTIMORE, MARYLAND  
ENVIROCOLLAB



BLISS (Baltimore Living in Sustainable Simplicity) Meadows was founded by pediatric nurse Atiya Wells who set out to address the lack of access to nature and environmental programming in urban environments, particularly for Black, Indigenous, and People of Color (BIPOC) families in Baltimore. The mission of BLISS Meadows, as a community-managed open space and urban farm, is to engage communities of color in Baltimore on nature connection, urban agriculture, self-reliance, and sustainability.

The design team has been working in close partnership with Wells' educational organization called Backyard Basecamp to co-develop an ecological master plan for the 10+ acres of public and private land in a way that respects the site and neighborhood history, taking into account the structural issues of segregation and red-lining. The team also had to respond to modern day needs including economic and workforce development goals and environmental drivers based on the principles of regenerative landscape design, permaculture, and agroecology.

The design team hopes that through this process and the continued efforts of Atiya and her team, BLISS Meadows will continue to grow as a place where the community can come together learn about growing, preparing, and eating healthy food and as a space for BIPOC members of the community to discover both cultural and natural history in order to address issues around equitable access to green space.







2022 PRESIDENTIAL AWARD OF EXCELLENCE  
RESIDENTIAL DESIGN - MULTIFAMILY

## GLASSHOUSE

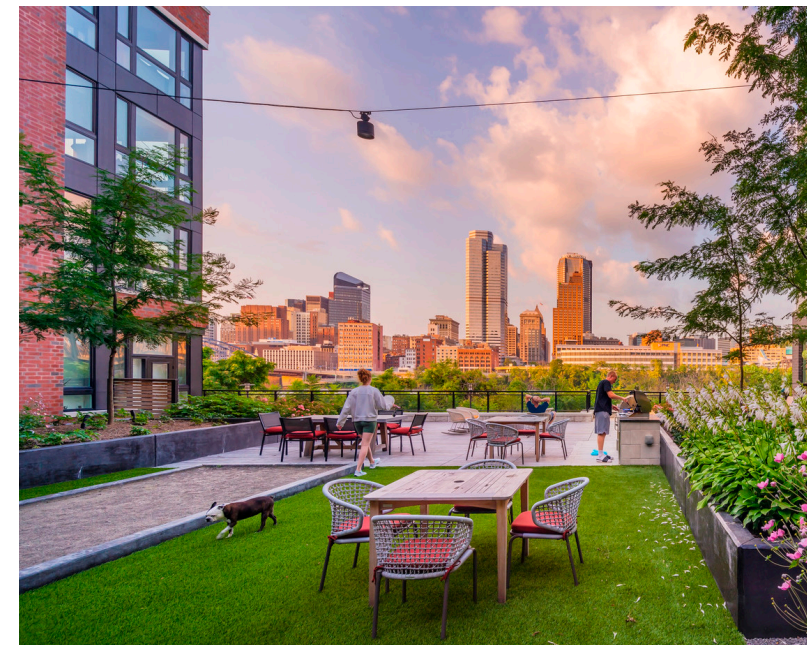
PITTSBURGH, PENNSYLVANIA

HORD COPLAN MACHT

Designed for a private developer on the site of Pittsburgh's historic glass making factories, Glasshouse is positioned along the Monongahela River overlooking Pittsburgh's Central Business District. This transit-oriented project is within walking distance of downtown, with a site that shares a rich history with the city and the neighborhoods that surround it. The project was constructed on a brownfield and met environmental design standards for buildings adjacent to the 100 yr. floodplain. Phase 1 included the development of two multifamily buildings providing 316 market-rate apartments, retail and parking. The building and landscape were designed to follow urban riverfront guidelines and encourage residents, visitors and the community to view the water and utilize the Three Rivers Heritage Trail for walking

and biking. Landscape architects at Hord Coplan Macht led the planning, entitlement and site design for the at-grade and podium spaces.

The landscape transformed the site into a walkable community with a focus on wellness, fitness, public space access, and safety. Landscape features include a Public Park space, the Heritage hiker/biker trail, streetscape with public access to the trail and several over-structure amenity courtyards for resident activities. The courtyards feature activity lawns for exercise and games, outdoor kitchen/grill areas, a shade trellis with outdoor dining space, a swimming pool, and a variety of seating throughout with incredible views of the City.





2021 HONOR AWARD  
GENERAL DESIGN

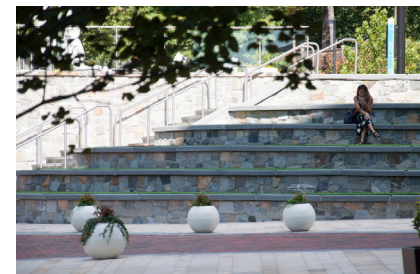
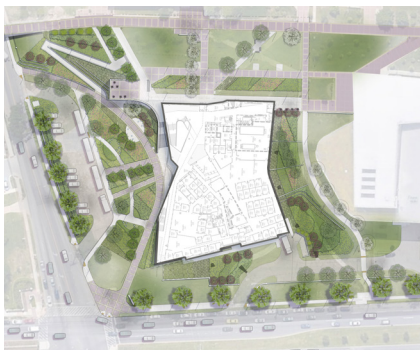
# CALVIN & TINA TYLER HALL

BALTIMORE, MARYLAND

FLOURA TEETER LANDSCAPE ARCHITECTS

Funded by a \$5 million gift – the largest in Morgan State University’s history – Tyler Hall provides a gateway to this HBCU’s campus in North Baltimore. The Landscape Architects worked in concert with the architectural, civil, and facilities team to integrate the contemporary building into the context of this continuously-evolving campus with a site design that incorporates traditional materials, dramatic planting, welcoming site amenities, and compliance with environmental regulations.

The Soper Student Plaza located on the 2nd floor extends to the main campus pedestrian corridor while the entry plaza provides generous arrival space with open space for gathering. Informal seating areas articulated by contemporary paving patterns and casual furniture accommodate admissions groups and current students. Abundant planting yields a rich landscape with complete visibility throughout. A lushly planted, 10,000 sf green roof on the third floor serves faculty, staff and as special event space for the University President.



2021 HONOR AWARD  
GENERAL DESIGN

# THE COLLECTION AT CHEVY CHASE

CHEVY CHASE, MD

MAHAN RYKIEL ASSOCIATES

The project team worked with the Chevy Chase Land Company and Streetsense on a rebranding of The Collection, a high-end boutique retail center. The Landscape Architect aimed to transform underutilized public spaces into attractive spaces for people to congregate within and enjoy, while attracting new users to the retail and restaurant offerings. Key elements include a gateway plaza with monumental signage and fountains, central plaza with an amphitheater and retail kiosks, and the restaurant courtyard for dining and gatherings.

The plan seamlessly integrates patterns and textures with the classic, clean lines of the existing architecture. Lasting materials are

highlighted with fabrics and natural landscape that soften the public spaces. Outwardly-focused plazas make a sophisticated statement with their ordered and contained geometry

Key design themes include: Textured: Comfortably chic and uniquely appointed, high-fashion yet warm-natured, exclusive but never exclusionary; Tailored: Smart but not showy, The Collection brand feels bespoke at every touch point, creating a sense of ownership; and Timeless: The Collection brand is high fashion forward but defies trends - this is a legacy property with enduring appeal.





2022 HONOR AWARD  
GENERAL DESIGN

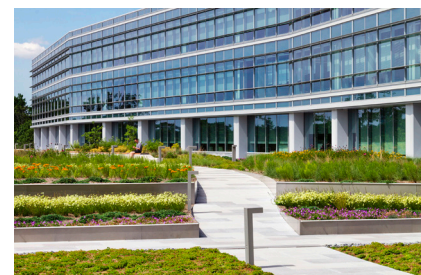
# RASH FIELD PARK - PHASE I

BALTIMORE, MD

MAHAN RYKIEL ASSOCIATES

Rash Field, located in Baltimore's Inner Harbor, is a six-acre waterfront public park that attracts over 14 million visitors annually. Originally intended as a recreational space for local schools, it was used for large events, festivals, an ice rink, and niche sports. The Waterfront Partnership of Baltimore, which manages Rash Field, aimed to transform it into a destination for a diversity of users and uses. To achieve this goal, the design team involved the public in the park planning process through community stakeholder meetings,

surveys, and focus groups. The themes identified in this process include recreation and play, education and ecology, programming and entertainment, and health and wellness. The new design of Rash Field aims to provide a space for Baltimoreans to come together, celebrate, and empower themselves. The design team worked to create welcoming arrival points, open the edges, celebrate water views, and design places for gathering, learning, and playing.



2022 HONOR AWARD  
GENERAL DESIGN

# LG NORTH AMERICAN HEADQUARTERS

ENGLEWOOD CLIFFS, NJ

HOK

LG's North American headquarters in Englewood Cliffs, New Jersey is a flagship facility that showcases its leadership in sustainability while protecting the adjacent Palisades Interstate Park, a National Historic Landmark. The building is nestled into the landscape below the tree line and preserved existing woodlands and wetlands while adding more green space to the site. Climate resilience is prioritized throughout the campus, with green roofs and solar panels supplying 30% of the building's electricity and a retention pond to reduce site

runoff. The landscape design emphasizes a sense of connection to the surrounding environment, with amenities like walking trails, gardens, a basketball court, and a great lawn for outdoor events and gatherings. The indoor areas also feature green walls and offer views of the landscape and Hudson River. The design integrates nature into the workplace to enhance the mental and physical well-being of employees.





2021 MERIT AWARD  
GENERAL DESIGN

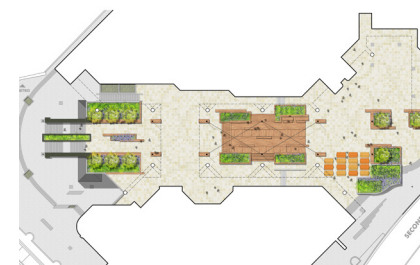
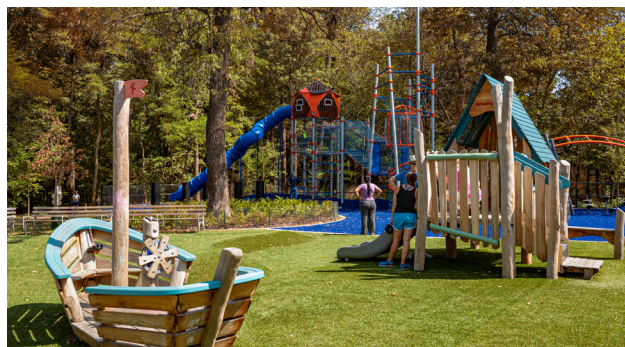
# DAWSON TERRACE PARK

ARLINGTON, VA

ARLINGTON CO. DEPT. OF PARKS & RECREATION & AMT LANDSCAPE ARCHITECTURE

Dawson Terrace Park is a community park that houses the historic Dawson-Bailey House and Community Center. After gathering insights from neighbourhood stakeholders, the design team transformed the outmoded park into a vibrant gathering space complete with inclusive playgrounds, a multi-purpose court for sports and undefined play, and improved lighting, all while addressing site accessibility and stormwater management issues. The final design purposefully incorporates historically appropriate materials to preserve the park's

spirit and takes full advantage of the forested edges and specimen trees to provide shade and comfort to park patrons. A new parking lot with vehicular and bike parking along with an improved pathway system enhances community connectivity. A stone reservoir beneath the playground surfacing captures stormwater runoff from the multi-purpose court. The hardscape elements of the park are enhanced by a lush plant palette selected for maintainability, textural variation, screening qualities, and color contrast.



2021 MERIT AWARD  
GENERAL DESIGN

# SILVER SPRING METRO PLAZA

SILVER SPRING, MD

LANDSCAPE ARCHITECTURE BUREAU

Built decades ago adjacent to an important transit node on Metro's Red Line, the Silver Spring Metro Plaza comprises several office and retail buildings organized around a linear plaza in downtown Silver Spring, Maryland. The Landscape Architect was tasked with a delicate renovation to transform the largely inhospitable plaza into an active and vibrant public space. A broad conceptual approach - "slow down and warm up the plaza" - emerged readily, though a series of critical constraints and budgetary concerns presented challenges.

A series of light yet expansive wood and metal furnishings and planter elements unifies the central section of the plaza, transforming it into a welcoming space for daily interactions as well as a venue for live music and events. The integral bench and table elements punctuated by metal planters also help to articulate the edges of the space and allow for the inclusion of small trees, shrubs, and perennials, creating a significantly more pleasant and welcoming environment.





2022 MERIT AWARD  
GENERAL DESIGN

# HOLLYWOOD GATEWAY PARK

COLLEGE PARK, MD

FLOURA TEETER

The neighborhood of Hollywood in northern College Park, Maryland is located at the intersection of Baltimore Avenue and the Washington DC Beltway – major local and regional roadways. The 0.04-acre site is a former single family residential parcel at the edge of a modest residential community. With few public open spaces available to the neighborhood, the City acquired property for a new park - a location that offered visibility as a community gateway and direct access to residences and a nearby elementary school.

The site presented multiple design challenges: significant elevation change, accessibility, noise and safety concerns from 6 lanes of adjacent traffic, runoff, small budget, and the limitations of a small site. The design includes a densely planted alcove that buffers the noise and traffic above; a playful slide transitions between levels; an eye-catching pavilion provides gathering space at both levels and is visible from the roadway; a meandering path, integrated seating, and generous lighting invite people to linger.



2022 MERIT AWARD  
GENERAL DESIGN

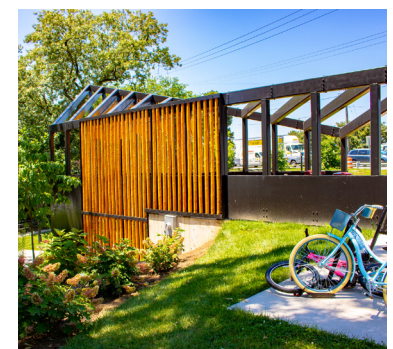
# 1771 N STREET

WASHINGTON D.C.

HOK

1771 N Street is a LEED-Gold certified office building in Dupont Circle, Washington D.C. The building underwent a renovation led by a team of architects and landscape architects, which transformed the iconic urban landmark into a contemporary and sustainable workplace. The team took advantage of the building's unique structure to introduce new green space, creating a connection to nature within the urban core. The plaza in front of the building was transformed into a human-scale space shaded by trees and featuring natural materials, prioritizing openness to the street while balancing the privacy needs of tenants. A serpentine ribbon runs throughout the plaza, providing a focal point and inviting visitors to take a

moment of respite. The penthouse features an outdoor work and amenity space with warm ipe wood decking and vibrant plantings, which offer expansive views of the DC skyline and provide food and habitat for pollinators. The building's floor plate was re-imagined to create windows on all sides, offering daylight and views to all building occupants, and a distinctive outdoor amenity space was added for the community. The renovation is not only an investment in the building but also in the community and its people, creating an attractive lease space for future tenants and meeting the needs of the modern workplace.







2021 TRAVELING AWARD OF INNOVATIVE EXCELLENCE  
ANALYSIS & PLANNING

# ELLICOTT CITY WATERSHED MASTER PLAN

ELLICOTT CITY, MD

MAHAN RYKIEL ASSOCIATES

Ellicott City is an historic town in Howard County, Maryland that has a rich history of connections to the National Road, the original B&O Railroad, and a mill heritage dating back to 1772. The town is a significant tourist destination, entrepreneurial hub, and historic district with much of its original architecture intact. In 2016, the town experienced a devastating flood due to heavy rainfall, which resulted in the displacement of hundreds of residents, the death of two people, significant damage to businesses, and millions of dollars in damage. Following the 2016 flood, the county's goal was to return Ellicott City to normalcy as quickly and affordably as possible, and a master plan was underway to address not only flood mitigation but also more traditional comprehensive planning elements such as transportation, community character, and economic development.

In 2018, the town experienced a second devastating flash flood, which led to a renewed look at the master plan and an accelerated concept for flood mitigation. The Ellicott City Watershed Master Plan (2020) provides policies and actions for protecting and enhancing the

town and its surrounding watershed. The plan integrates strategies for community character, flood mitigation, environmental sustainability, economic development, and transportation. Public input and technical analysis were considered to create a comprehensive, community-driven vision for a stronger and more resilient Ellicott City.

The Landscape Architect served as the project lead and directed a team of sub-consultants including water resource engineers, transportation planners, economic development professionals, and historic preservation consultants. The Landscape Architect also co-lead community engagement and served as the urban designer and master planner for the effort. The master plan acts as a foundational guide for decision-making and provides a place where all watershed efforts are integrated to increase the town's resilience. The plan provides guidance for project managers to consider community character, economic position, and livability in the design process and leverages opportunities to enhance the town's resilience through multiple capital investments.





2021 MERIT AWARD ANALYSIS & PLANNING

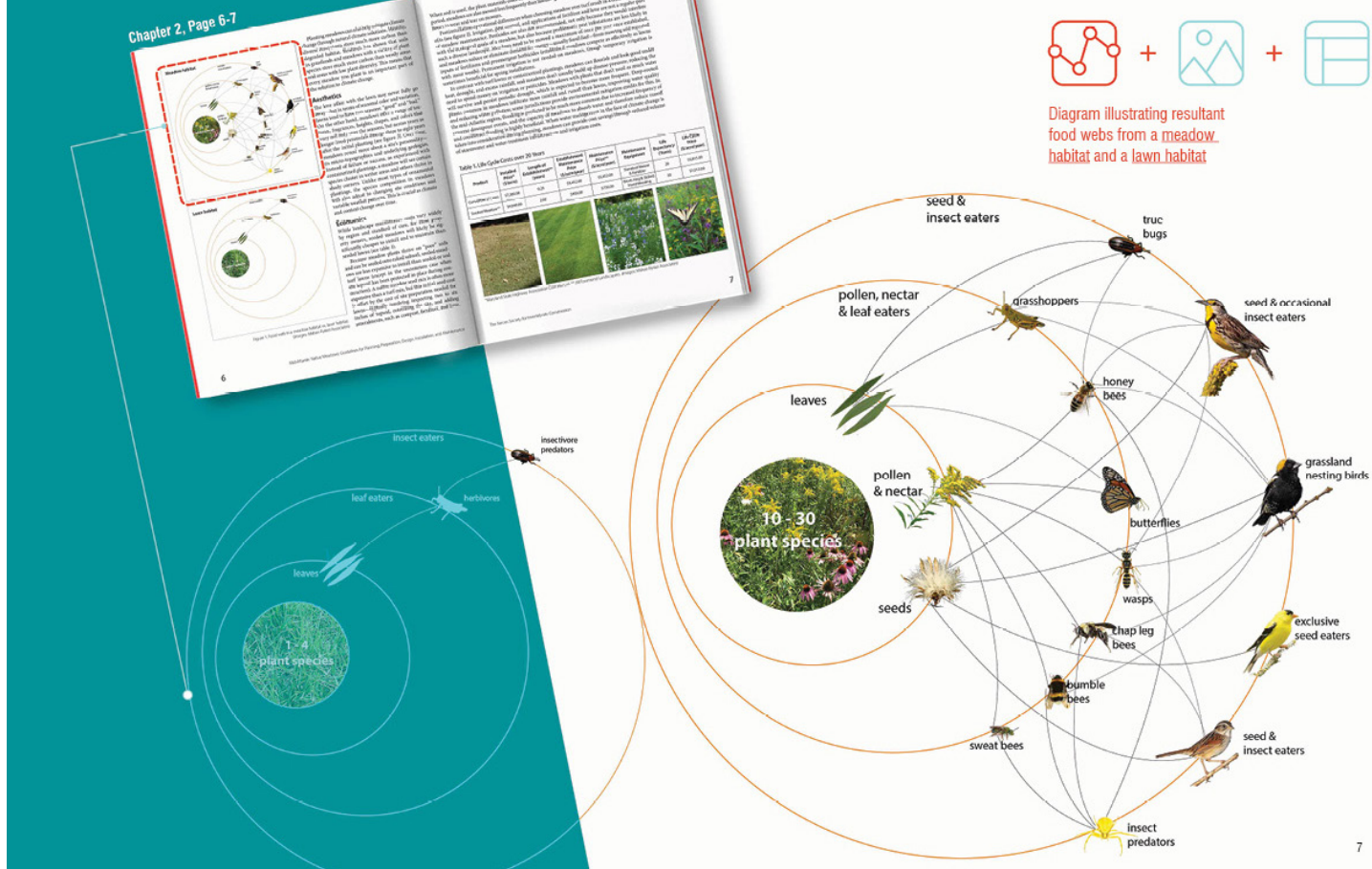
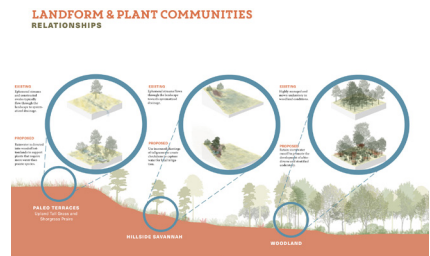
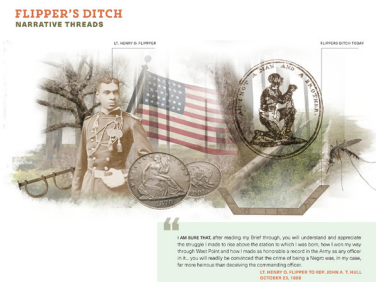
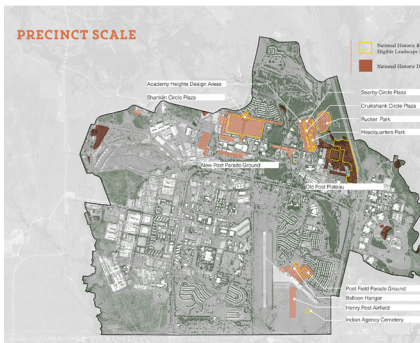
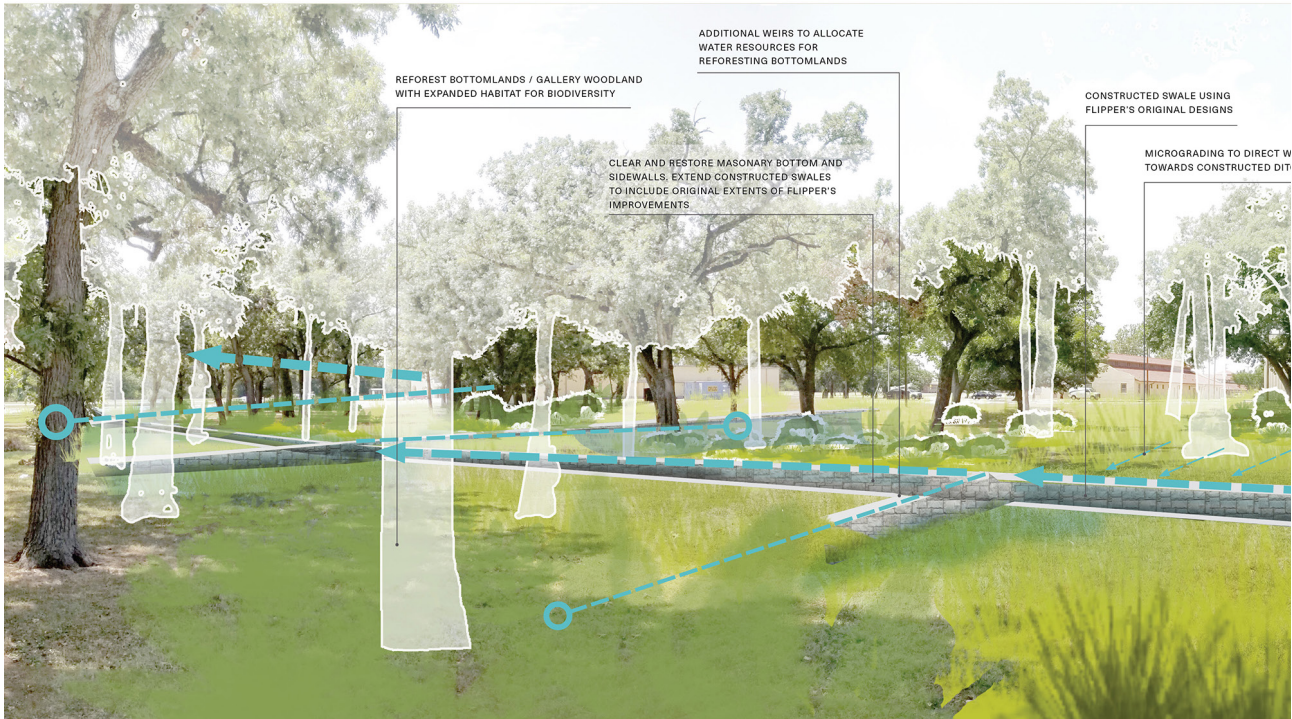
# MEDICINE FOR DISRUPTION

FORT SILL, OK

JONATHAN CECI LANDSCAPE ARCHITECTS

The Army Corps of Engineers has created a plan for Fort Sill in southwest Oklahoma to cultivate sustainable plant communities and preserve its cultural landscapes. The fort's 9,000 acre developed core includes a rich array of historical landscapes and archeological remains that tell the story of the American West and the rise of the US as a global superpower, as well as the stories of marginalized voices from the past and present. The fort straddles the line between the Wichita Mountains and the Red Beds Plains, with grasses and

forbs once dominant but now displaced by invasive plants due to the disappearance of buffalo herds and suppressed fires. The study was led by landscape architects and involved input from various stakeholders, including Fort personnel, tribal representatives, archeologists, preservationists, and landscape managers, to balance ecological services with historic preservation and maintenance constraints.



2021 HONOR AWARD COMMUNICATIONS

# MID-ATLANTIC NATIVE MEADOWS

MID-ATLANTIC REGION, U.S.A.

MAHAN RYKIEL ASSOCIATES

The Mid-Atlantic Native Meadows guide is a comprehensive guide to designing, installing, and maintaining native meadows in institutional and commercial projects. It provides valuable information on the ecosystem services provided by meadows, their benefits of low-maintenance alternatives to intensively managed horticultural landscapes, and the unique needs of the different stakeholders involved in meadow projects. The guide is tailored specifically to the challenges faced in institutional and commercial projects and is an accessible introduction to the subject, aimed at helping property owners, landscape architects, contractors, and

property managers understand the benefits and requirements of meadows. The guide is the result of a collaboration between a Landscape Architect and a Conservation Organization, and draws on subject matter expertise from ecologists, including native plant specialists, pollinator specialists, and climate change specialists. The aim is to promote communication and collaboration between all stakeholders, and to encourage the use of meadows as a sustainable, cost-effective, and high-impact landscape typology that supports pollinators and wildlife.





2022 TRAVELING AWARD OF INNOVATIVE EXCELLENCE  
UN-BUILT DESIGN

# ADA UNIVERSITY - SOUTH CAMPUS

BAKU, AZERBAIJAN

MAHAN RYKIEL ASSOCIATES

The Landscape Architect worked closely with ADA University (the Client) and Kleinrock Studio Architecture (KSA - the Architect) to develop a master plan for ADA University's South Campus. Located in historic Baku, Azerbaijan, ADA University is a world-class institution that offers graduate and undergraduate degrees. From the University:

"Ours is a community of academic excellence, accountability, shared governance, honor, integrity, transparency, diversity, collaboration, communication and social responsibility that empowers individuals to challenge conventional thinking in pursuit of new ideas."

Building upon this challenge to conventional thinking, the Landscape Architect was the creative force behind the master planning approach and led the discovery phase of the planning effort, which focused on alternative ways for the campus to expand and connect

to the existing campus core and its surrounding uses. The previously approved planning approach (by the Architect) envisioned two new campus buildings and a plaza space, which were independent from the other campus amenities. The landscape architect's vision led the University to pursue a new approach, which focused on the overall campus experience.

The landscape architect's vision was two-fold in its approach. First, a focus on creating a campus that blended the adjacent Baku city grid with the existing Botanical Garden and Public Park, allowing for a unified campus that celebrates City, Site & Nature. This approach especially impacted the detailed site design of the project. Second, a focus on using the new campus as an extension of the Botanical Garden to create a flowing connection between the Botanical Garden and Public Park.





2021 MERIT AWARD  
UNBUILT DESIGN

# BENNETT'S VILLAGE PLAYGROUND

CHARLOTTESVILLE, VA

MAHAN RYKIEL ASSOCIATES

Named in honor of Bennett Charles McClurken-Gibney, an inspirational five-year-old with Spinal Muscular Atrophy, the future Bennett's Village Playground will cover 3 acres and will include fully-accessible play structures and spaces, a tree house, sensory garden, cableway, water play area, hide-and-seek maze, wheelchair racing track, restroom pavilion, and native landscaping. The design deploys evidence-based strategies layering sensory experiences in space and time to support inclusivity, kinship, and community.

The Bennett's Village design team embraced the opportunity to work collaboratively with community stakeholders and subject matter experts to develop a park and playground design that reflects the richness of all abilities. The park will be a place where all can come to see and be seen, providing freedom of movement and joyous moments for parents, children, and friends. Projects like this one give designers the opportunity to explore the richness of landscape through the lens of humanity's full range of formal and functional diversity.



2021 MERIT AWARD  
UNBUILT DESIGN

# GREENING AMERICA'S COMMUNITIES

BIRMINGHAM, AL | PITTSBURGH, PA | FORT HALL RESERVATION, ID | ALBUQUERQUE, NM

FLOURA TEETER LANDSCAPE ARCHITECTS

The Greening America's Communities (GAC) program was developed by the Environmental Protection Agency's (EPA) Office of Community Revitalization to help communities create environmentally friendly and economically prosperous neighborhoods. Four communities - Birmingham, Pittsburgh, Fort Hall Reservation, and Albuquerque - were selected to participate in the program to improve heat island mitigation and water quality. Intreegue provided technical assistance to the communities and developed a final design and action plan for

each site through on-site community engagement and design review meetings. The national COVID shutdown did not significantly impact the program, as the design team adapted to virtual options and community meetings were held over Facebook Live. Each community received unique solutions that celebrated their culture and context while providing meaningful public spaces and a roadmap for sustainable growth.



2021 MERIT AWARD  
UNBUILT DESIGN

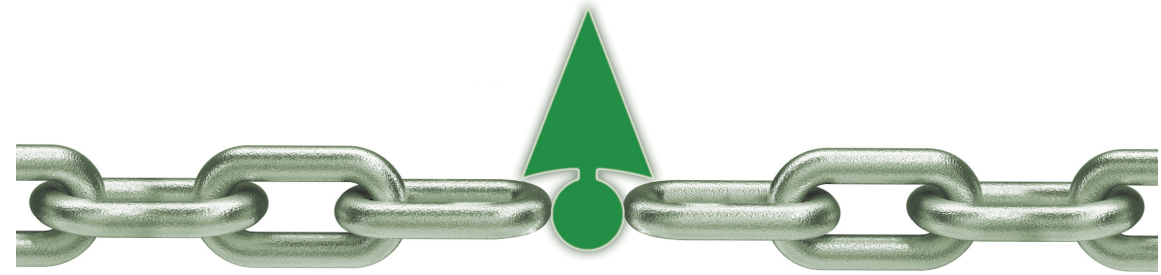
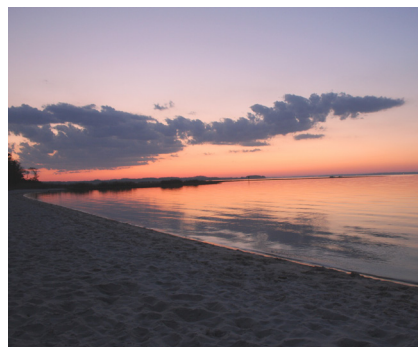
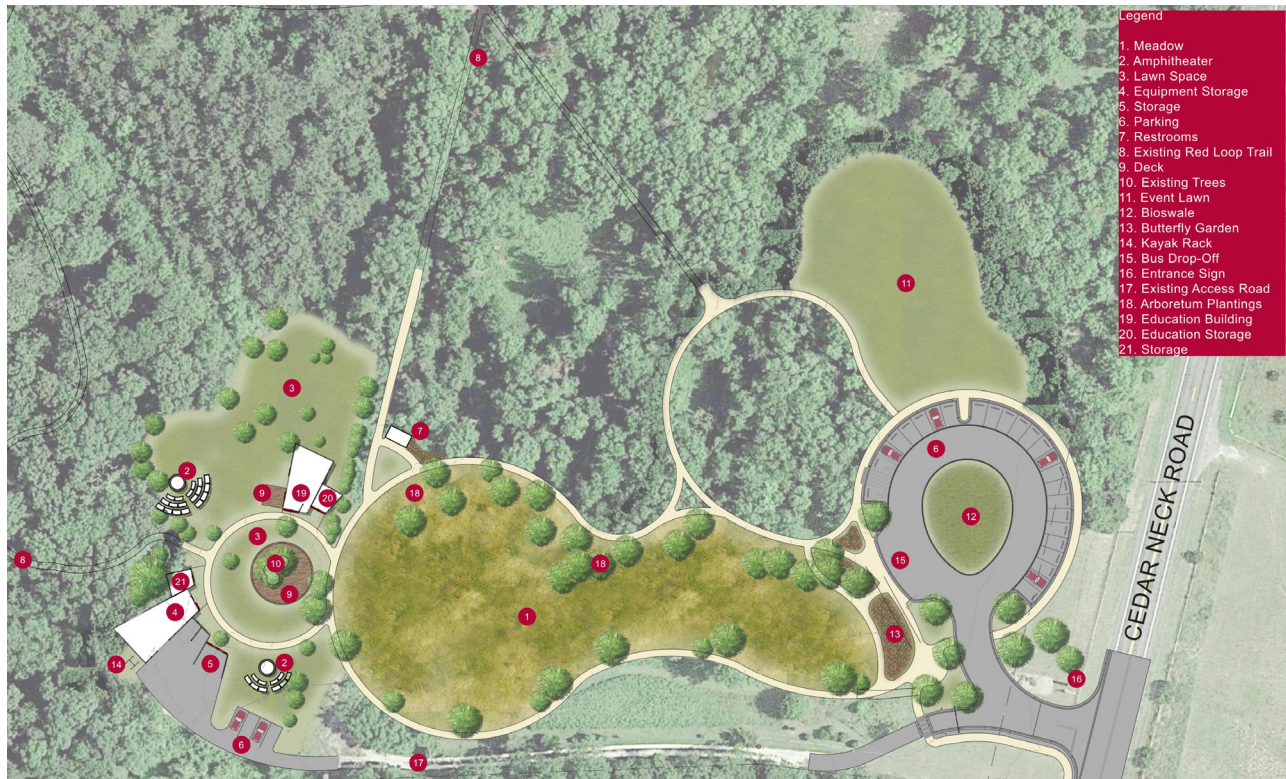
# JAMES FARM ECOLOGICAL PRESERVE

OCEAN VIEW, DE

KIMLEY-HORN

James Farm Ecological Preserve is a 150-acre bayside ecological preserve located in Ocean View, Delaware. It serves as an important resource for the Delaware Center for the Inland Bays and is a regionally significant natural preserve on the Inland Bays ecosystem, representing the diverse mix of ecotypes present on the Delmarva Peninsula. The Preserve is used for education about the Inland Bays ecology, teaching, restoration, and research. The Preserve is home to a variety of ecotypes, including salt marsh, dune grassland, pine/wax myrtle woodland, oak/heath forest, maritime forest, wetland, sandy beach, and saltwater cove. The public and

key stakeholders participated in the master plan development process to guide the management and sustainable use of the site. The overarching principles of the master plan call for making the property more accessible and interpretive for the public, especially students, while protecting and enhancing the ecological resources. The master plan identifies opportunities and constraints, develops a site design, recommends protection and development of resources, prioritizes areas for amenities, catalogs and interprets ecotypes, considers the impacts of climate change, and provides design principles for phased implementation.



On Site • Online • On Time

tel. 410-771-4700  
sales@manorview.com • www.manorview.com

*Large Inventory • Convenient Delivery • Field Grown Material*

info@plantedearthlandscaping.com  
**CALL: 410-857-4744**

**PLANTED EARTH** landscaping incorporated

**CELEBRATING 12 YEARS**    **WE ARE JUST BETTER AT THIS**

**Serving Maryland, DC,  
Northern Virginia, & Southern Pennsylvania**



**BRINGING YOUR VISION TO LIFE**

DESIGN CREDIT: BEECHBROOK LANDSCAPE ARCHITECTURE

LANDSCAPE DESIGN | MASTER PLANNING | CUSTOM DESIGN | TREE INSTALLATION | ARTISAN STONEMWORK | FIREPLACES | GARDEN STRUCTURES  
NATURAL STONE, BRICK & STRUCTURAL MASONRY | WATER FEATURES | GARDEN CONSTRUCTION | PONDS, WATER FEATURES | WATERFALLS & STREAMS

410.592.6766  
www.PinehurstLandscape.com



DAVE DEPORTER  
PRINCIPAL  
410-905-3861

DEPORTER, DOMINICK & ASSOCIATES

OUTDOOR DECORATIVE LIGHTING REPRESENTATIVES

WE REPRESENT:



2022 MERIT AWARD  
UNBUILT DESIGN

# THE CYLBURN ARBORETUM NATURE EDUCATION CENTER

BALTIMORE, MD

INTREEGUE DESIGN, INC.

The Nature Education Center at Cylburn Arboretum has been a long-time dream of the Friends Group. This project not only transforms the historic carriage house into offices but creates a space for a Nature Education Center and Garden. These gardens become experiential and educational; rooted in the land, providing a place where people living in an urban environment can be immersed in nature. The concept of the design was "UNCOVERING A HIDDEN WORLD".

An existing Catalpa tree will sit at the heart of the garden and a hammock lounge will be strategically placed so that visitors will be encouraged to look up into its branches, taking a new approach to garden views. From recycled "fallen Cylburn wood" benches, a Hügélkultur, an outdoor classroom, an artful stormwater approach, to displays of plants known and unknown that thrive in our region – the garden will be a space that enhances the experience



2021 HONOR AWARD  
INSTITUTIONAL DESIGN

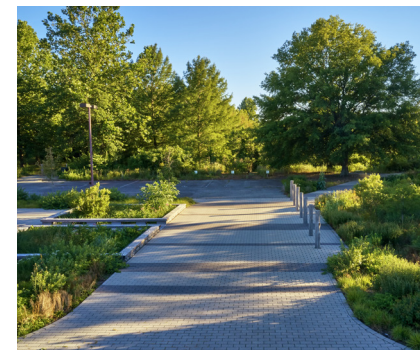
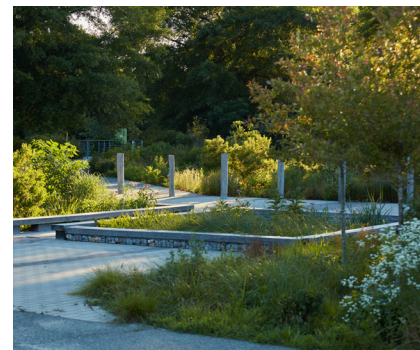
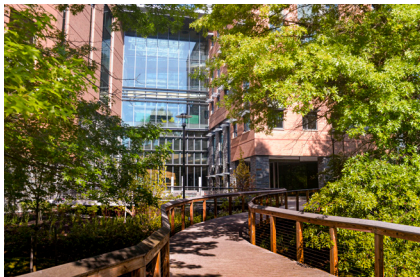
# USG BIOMEDICAL SCIENCES & ENGINEERING BUILDING

ROCKVILLE, MD

MAHAN RYKIEL ASSOCIATES

The Biomedical Sciences and Engineering Sciences building (BSE) at the Universities at Shady Grove is a six-level facility that spans 220,000 square feet and brings together nine institutions to offer advanced degree programs in technology and medical science. The building offers programs in physical therapy, dentistry, mechanical engineering, biotechnology, biological sciences, electrical engineering, environmental science, and other related fields. The building is designed to create a sense of “home” on the regional campus, enhancing the student experience by promoting collaboration and socialization. The project is LEED Platinum certified and

has a strong connection to the local site ecology, with two courtyards offering immersive natural experiences for visitors. The building is dedicated to enhancing human health and happiness through biophilic experiences throughout the site and building. The project re-centers the campus, creating a magnet of activity that is highly transparent and connected to the community and environment. It is an expression of USG’s role in the community, addressing both the needs of employers and the educational needs of students.



2022 HONOR AWARD  
INFRASTRUCTURAL DESIGN

# PARKING LOT ALIVE!

RIDGELY, MD

CAMPION HRUBY LANDSCAPE ARCHITECTS

Parking Lot Alive is a project that transformed a simple parking lot into an example of best practices in stormwater management and biophilic design. The Adkins Arboretum in Maryland’s Eastern Shore tasked a landscape architect with enhancing their parking lot and main entrance. Working with a team of civil engineers, the design team used six best management practices (BMPs) to collect and manage runoff while also creating a bold, welcoming entrance. The project utilized a layered system of BMPs and native plantings to surpass the requirement for stormwater management, while also serving as

a frame for entrances and parking areas. Local materials were used whenever possible, and the project was funded by the Chesapeake Bay Trust G3 Implementation Grant and the Chesapeake and Atlantic Coastal Bays 2010 Trust Fund. As a result of the project, the parking lot now attracts not only human visitors but also numerous species of birds and pollinators. Over time, the tree canopy will develop and shade the parking lot, reminiscent of the region’s coastal plain forests prior to modern agriculture.



2022 HONOR AWARD  
INSTITUTIONAL DESIGN

# KINGTON PLAZA AND CHRISTIANSEN OUTDOOR LEARNING SPACES

GRINNELL, IA

AYERS SAINT GROSS

The Kington Plaza and Christiansen Outdoor Learning Spaces at Grinnell College is a 3-acre quadrangle located in the heart of the campus. The design was a collaborative effort between faculty, staff, students, and the facilities department, with a focus on accessibility, flexibility, and community. The outdoor classrooms and social spaces are designed to be used for academic discourse and student life and draw energy from the adjacent building. The design reflects the themes of community, educational excellence, and health and well-being outlined in Grinnell's

strategic plan. The outdoor learning nodes are equipped with power outlets and Wi-Fi access, and dynamic lighting provides low levels for nighttime use. The prairie context of Grinnell was embraced in the design, with a shift from predominantly turf-grass to a prairie-inspired ground plane. The Kington Plaza and Christiansen Outdoor Learning Spaces have become the new outdoor heart of campus life and have been in high demand since their completion.



2022 HONOR AWARD  
INSTITUTIONAL DESIGN

# SCHOOL INSIDE-OUT

NEWARK, DE

JONATHAN CECI LANDSCAPE ARCHITECTS

The Independence School in New Castle County, Delaware has a strong commitment to developing self-motivated and curious students. The school engaged a consultant team to design an acre of outdoor classrooms, play spaces, children's gardens, and working landscape to expand environmental education. The result is a diverse array of outdoor learning spaces suitable for students of all ages and abilities, linked together by a meandering pathway and a central gathering space. The design includes a variety of natural and fabricated materials and incorporates pre-existing play equipment.

The new outdoor complex is a teaching collection where students can learn about plant species, pollinators, and bird habitat, and about the relationship between species and micro-climates. The stormwater runoff is filtered and infiltrated through a series of bioretention cells. The new outdoor complex has transformed the school's educational model, leading to a growing sensitivity among students towards the natural environment and a more holistic understanding of their learning.



2022 HONOR AWARD  
INSTITUTIONAL DESIGN

# UMD CLARK HALL

COLLEGE PARK, MD

MAHAN RYKIEL ASSOCIATES

Defining a new eco-urban district for the University of Maryland, the site design for A. James Clark Hall integrates principles from the fields of engineering and biology to support community and ecosystem health. The site design intermingles engineered walkway compositions with lush zones of naturalized planting communities that highlight biological applications. Numerous areas of the site provide respite for faculty, staff and students. By focusing on local and sustainable materials, the site design at Clark Hall ensures

that the intellectual footprint of the project extends far beyond its environmental footprint. As the district develops, the project supports future implementation of complete streets, extending multiple transit modes into the site's edges. The building and site design establish a novel precedent for future campus growth. Taking cues from the adjacent wetlands, stream buffers and waterways, the site design promotes eco-urban principles, recognizing the project's position within both an urbanizing campus and complex natural ecosystem.



2022 MERIT AWARD  
INSTITUTIONAL DESIGN

# PATRICK & RAINE MULLAN'S GARDEN

LUTHERVILLE, MD

SITE RESOURCES, INC.

The design team worked with Johns Hopkins Medicine to expand their Green Spring Station campus in Lutherville, MD, which included a new outpatient facility with a healing garden. The garden was originally planned as a recessed courtyard but was later reimagined as a restorative outdoor room for patients of the Medical Oncology Unit. The design of the garden had to consider accessibility, comfort, and the compromised immune systems of patients. The garden is bounded by parking on two sides, which raised concerns about vehicular noise and privacy. The main access to the space is through

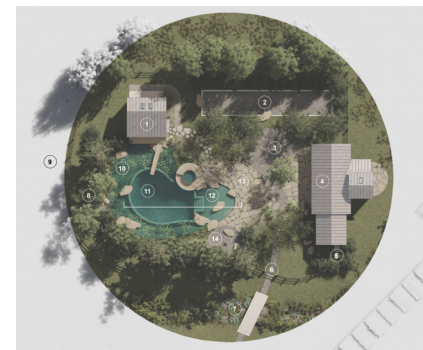
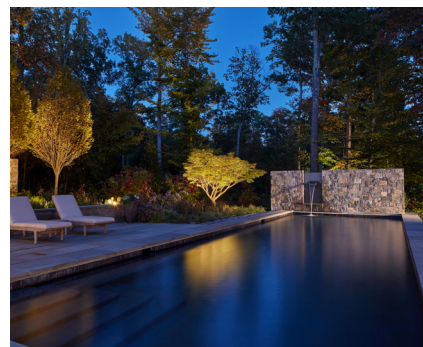
the Medical Oncology Unit on the ground floor of the building. The garden is designed with a contemporary architectural style and includes traditional wire-cut brick and Pennsylvania bluestone, as well as a porcelain paver for a smooth, slip-resistant surface. The focal point of the garden is a fountain that is located opposite the building and masks vehicular sounds. The garden is filled with lush plantings and traditional wood benches and chairs for patients and their families to enjoy. The design details provide a safely accessible haven for patients in treatment.



2021 MERIT AWARD  
RESIDENTIAL DESIGN SINGLE FAMILY  
**RUNNING BROOK**  
GREAT FALLS, VA  
CAMPION HRUBY LANDSCAPE ARCHITECTS

The Running Brook Garden is a beautiful outdoor space that was designed to provide the owners with a place to enjoy all year round. The landscape architects were tasked with integrating a pavilion, fireplace, pool, and terraces into the existing home while respecting the site's topography, architecture, and views. The pool was placed in a strategic location to provide functional outdoor spaces at both the lower and upper levels. The Prairie-style pavilion features a low-slung roof, bundled posts, exposed

rafters, and metal roof. A formal fireplace, on axis with the house, screens views of the neighboring property, while a freestanding stone wall creates a backdrop for three hornbeams and native plantings. The fountain wall both terminates the long axis of the pool and hides the pool equipment. The selection of building materials and colors was carefully chosen to complement the existing home, while the plant palette was selected for year-round interest.



2021 HONOR AWARD  
RESIDENTIAL DESIGN SINGLE FAMILY

**APOTHEOSIS FARM**  
CHESTERTOWN, MD

SOUTH FORK STUDIO LANDSCAPE ARCHITECTURE

The Landscape Architect was hired to design a traditional waterfront swimming pool and pool house for a 35-acre farm in Maryland. However, after two years of discussions, the scope of the project shifted to a Natural Swimming Pool. The clients were introduced to this concept, which uses beneficial bacteria and aquatic plants to clean the water and is in line with their sustainable lifestyle. The scope of the project expanded and included a bio-swale to slow and filter stormwater runoff, a dining area, a fire pit, an outdoor shower, a cedar hot tub, and a bocce court. The project also included a home office, an apothecary, and a greenhouse for the clients'

holistic medical practice. The space was defined using crushed stone, flagstone, and fieldstone boulders. All new plants used in the project were native and provided habitat for insects and birds. To enter the site, a wooden footbridge connects to a gravel path with a wooden gate. The Natural Swimming Pool was hidden from outside view and was lined with a fiber-reinforced polyethylene liner and cobbles, with the filter area planted with native aquatic plants. The end result was a unique and rare one-of-a-kind landscape for the clients' forever home.



2022 MERIT AWARD  
RESIDENTIAL DESIGN SINGLE FAMILY

# SPRING HOUSE GARDEN

WASHINGTON, D.C.

FORM GARDEN DESIGN

The Spring House Garden is located in the Wesley Heights neighborhood of Washington, DC and was in need of renovation. The new owners, who were in the process of renovating the historic home, wanted to restore the garden while respecting its history and meeting the needs of their young family. The goals for the garden were to improve the front garden to invite guests to the front door, improve the connection between the house and the back garden, create a usable lawn space for their kids, address drainage issues on the property, and eliminate invasive ground covers and replace them with native plantings. The designer separated the front walk

from the parking area and added a hedge to focus attention on the main block of the house. In the back, the designer created a strong structure that tied the architecture of the main house and spring house together and highlighted the movement of water. The slope was used to add color and whimsy to the back garden with a mixed perennial planting. The hillside has become one of the greatest features of the garden as it evolves from season to season, inviting pollinators. The beauty of the Spring House Garden is its respect to both the architecture and the land, creating a garden that is meant to be observed, drawn into and enjoyed throughout every season.



2021 MERIT AWARD  
RESIDENTIAL DESIGN - MULTIFAMILY

# ARROWWOOD

NORTH BETHESDA, MD

DESIGN COLLECTIVE, INC.

The Arrowwood project is the third phase in a masterplan aimed at transforming a suburban park-and-ride vehicle-centric Metro station into a mixed-use, pedestrian-centric community. The challenge was to turn a poorly defined surface parking lot with a 20-foot grade change into a dense residential community with strong urban edges. The solution was a 5-story residential building that wraps around a concealed parking garage. The design was driven by the ethos of "wellness by design,"

which aimed to maximize health benefits of biophilic connections in an urban setting. To connect the public and private realms, the design used the American vernacular "front yard" and "front porch" to foster chance and planned encounters and enhance social livability. The visual porosity of the building at key locations provides a transition from the hustle and bustle of life to a quiet and reflective urban sanctuary.



2021 MERIT AWARD  
RESEARCH

# CONFLUENCE COMMUNITY PARK

CHILLUM, MD

UNIVERSITY OF MARYLAND

The proposed design for Confluence Community Park is based on a sensory design framework that applies the study of environmental psychology and cognitive neuroscience, landscape architecture, and art to the physical, biological, cultural, and sensory attributes of the park. The park serves low-to-moderate income African American and immigrant communities living in the surrounding neighborhoods and is located between three community parks near Sligo Creek and the Northwest Branch of the Anacostia River in Hyattsville, Maryland. The design

framework is based on psychologist J.J. Gibson's theory of perceptual systems and considers the five modes of attention that human beings use to understand their environment. The resulting plan includes features such as a curving boardwalk, water cascading over stone weirs, smooth wood railings and benches, scented plants, round entry arches, and abundant plantings to appeal to visitors' senses, foster engagement, and promote environmental stewardship and community.



**SAVATREE**  
We Care For What You Love

In order to realize your  
**VISION**  
you need a partner  
who shares your  
**PASSION**

Learn more at [savatree.com](http://savatree.com) or call (301) 545-1712

Trees | Shrubs | Lawn | Deer | Ticks | Consulting

BABIKOW.COM 800.835.7617

**BABIKOW**  
GREENHOUSES SINCE 1875

ANNUALS, PANSIES  
PERENNIALS  
GRASSES AND FERNS